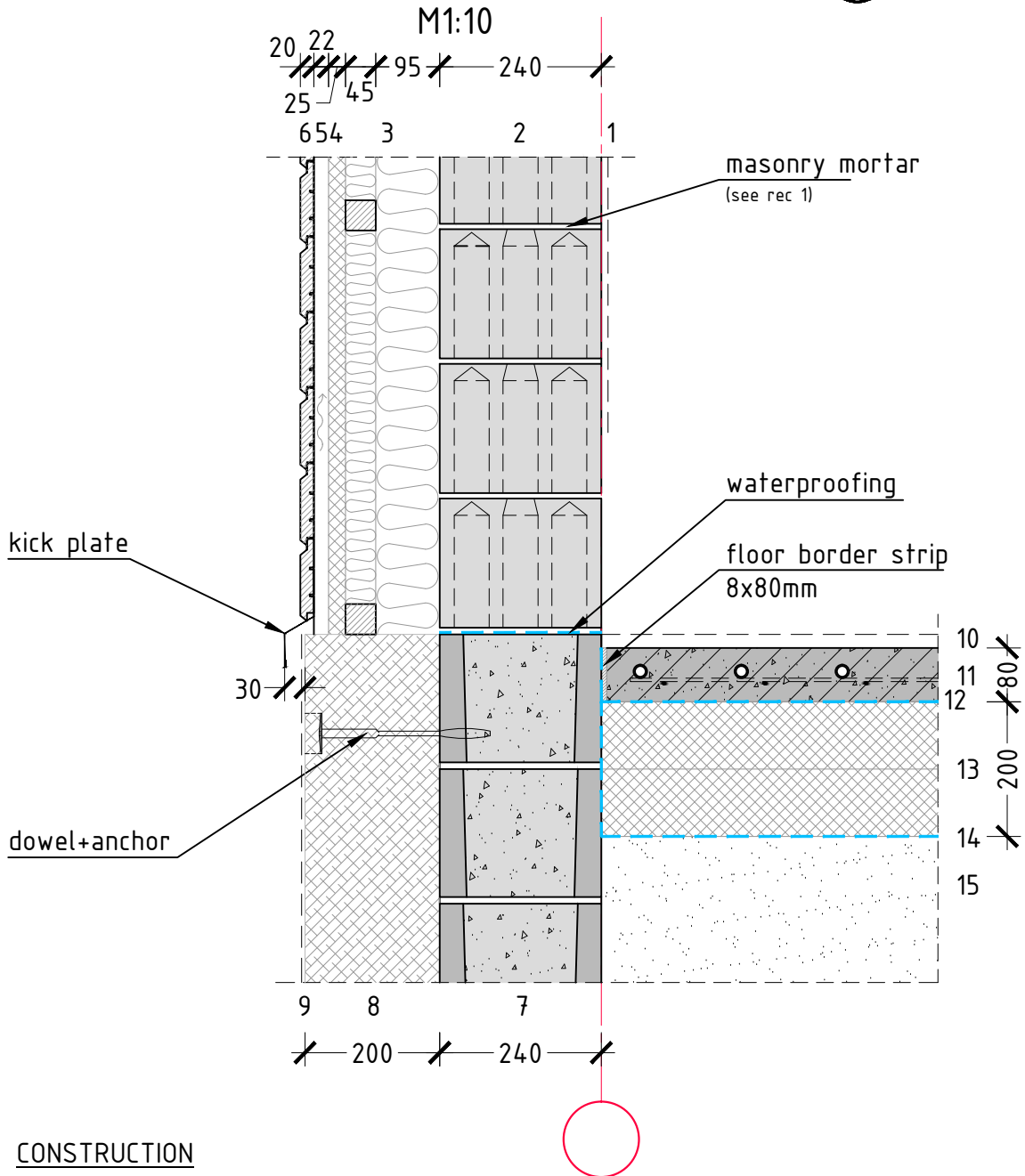


# GROUND FLOOR UNIT S1.2



## CONSTRUCTION

### Exterior wall

1. Interior finish
2. Silicate block 250x240x192mm
3. Thermal insulation between a wooden cross-frame  $\lambda=0.035W/mK$
4. Wind barrier
5. A breathing air gap
6. Facade board

### Ground floor

7. Foundation block
8. Insulation  $\lambda=0.035W/mK$
9. Ground floor finishing

### Floor

10. Floor finishing
11. Heated concrete slab
12. Waterproofing
13. Insulation  $\lambda=0.035W/mK$
14. Waterproofing
15. Compacted base

### NOTE:

The drawing is of informative nature and not suitable for design work

STRUCTURE	NET WEIGHT [kN/m <sup>2</sup> ]	THERMAL CONDUCTIVITY [W/m <sup>2</sup> K]	RECOMMENDATIONS
EXTERIOR WALL	3,8	0,19	1. For more information on masonry mortar, see <a href="http://www.silikaat.ee/tooted/kuiivsegud/">www.silikaat.ee/tooted/kuiivsegud/</a>
FLOOR	2,4	0,15	
GROUND FLOOR	6,2	-	