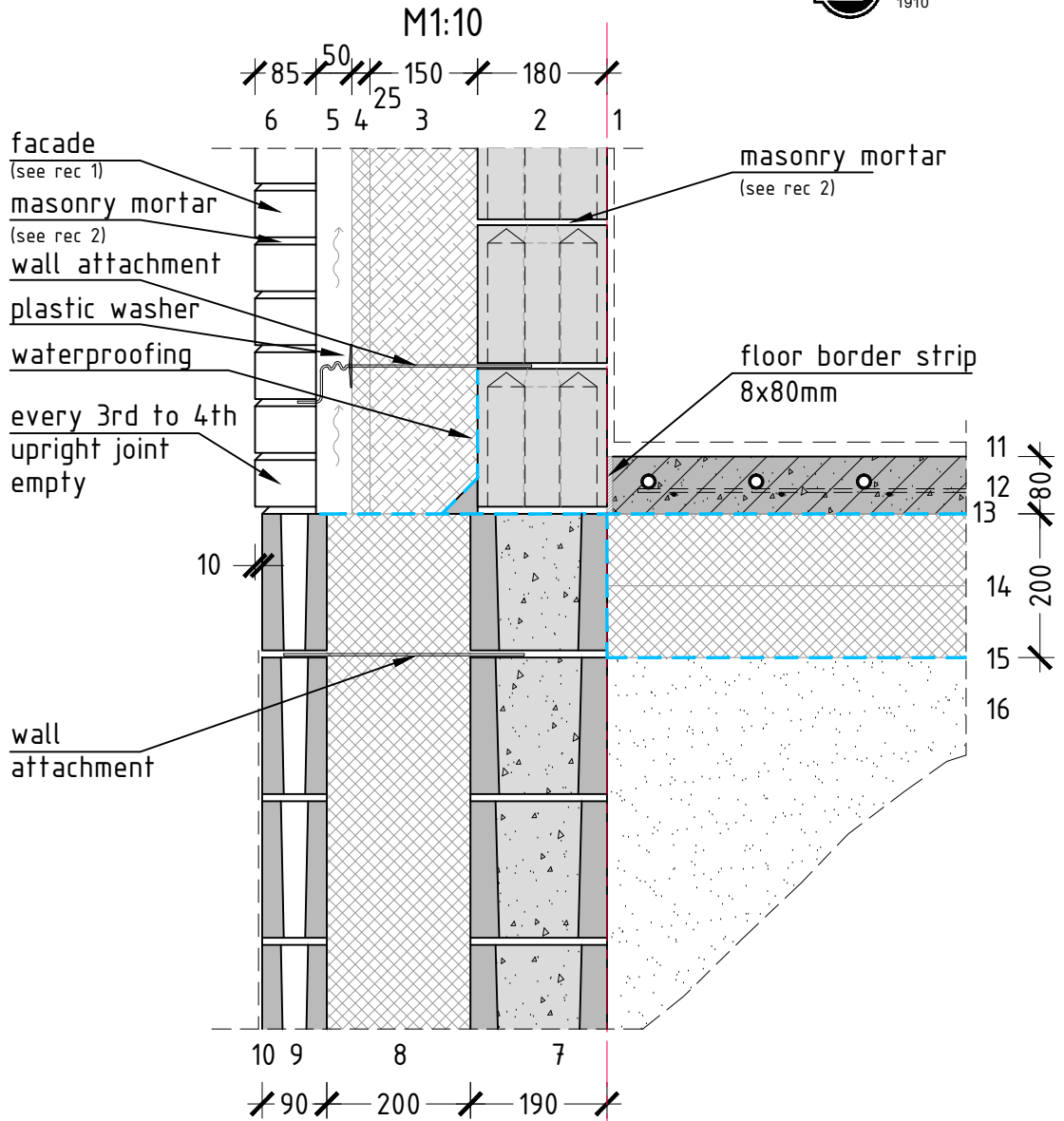


GROUND FLOOR UNIT S1.4



CONSTRUCTION

Exterior wall

1. Interior finish
2. Silicate block 300x180x192mm
3. Insulation $\lambda=0.035\text{W/mK}$
4. Wind barrier plate $\lambda=0.035\text{W/mK}$
5. A breathing air gap
6. Facade brick 250x85x65mm

Ground floor

7. Foundation block
8. Insulation $\lambda=0.035\text{W/mK}$
9. Ground floor block
10. Ground floor finishing

Floor

11. Floor finishing
12. Heated concrete slab
13. Waterproofing
14. Insulation $\lambda=0.035\text{W/mK}$
15. Waterproofing
16. Compacted base

NOTE:

The drawing is of informative nature and not suitable for design work

STRUCTURE	NET WEIGHT [kN/m ²]	THERMAL CONDUCTIVITY [W/m ² K]	RECOMMENDATIONS
EXTERIOR WALL	4,6	0,18	1. For more information on facade bricks, see www.silikaat.ee/tooted/silikaatto/silikaattellised/ 2. For more information on masonry mortar, see www.silikaat.ee/tooted/kuivsegud/
FLOOR	2,4	0,15	
GROUND FLOOR	6,2	-	