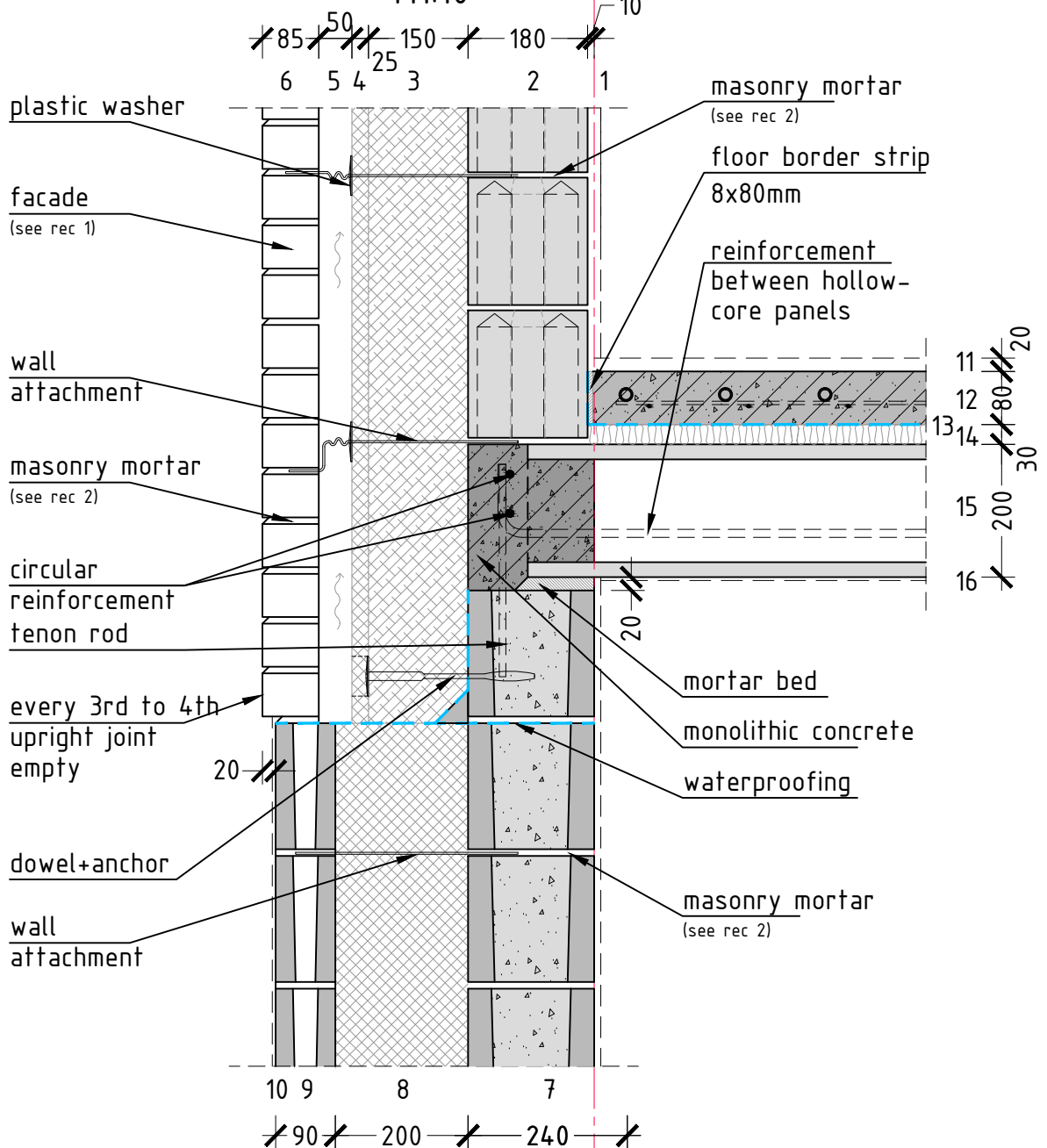


# GROUND FLOOR UNIT S1.6

M1:10



## CONSTRUCTION

### Exterior wall

1. Interior finish
2. Silicate block 300x180x192mm
3. Insulation  $\lambda=0,035W/mK$
4. Wind barrier  $\lambda=0,035W/mK$
5. A breathing air gap
6. Facade board 250x85x65mm

### Ground floor

7. Foundation block
8. Insulation  $\lambda=0.035W/mK$
9. Ground floor block
10. Ground floor finishing

### Inserted ceiling

11. Floor finishing
12. Concrete slab with floor heating
13. Waterproofing
14. Step noise insulation
15. Inserted ceiling panel
16. Ceiling finishing

### NOTE:

The drawing is of informative nature and not suitable for design work

STRUCTURE	NET WEIGHT [kN/m <sup>2</sup> ]	THERMAL CONDUCTIVITY [W/m <sup>2</sup> K]	RECOMMENDATIONS
EXTERIOR WALL	4,6	0,18	1. For more information on facade bricks, see <a href="http://www.silikaat.ee/tooted/silikaattooted/silikaattellised/">www.silikaat.ee/tooted/silikaattooted/silikaattellised/</a> 2. For more information on masonry mortar, see <a href="http://www.silikaat.ee/tooted/kuiivsegud/">www.silikaat.ee/tooted/kuiivsegud/</a>
INSERT. CEILING	5,0	-	
GROUND FLOOR	6,2	0,17	