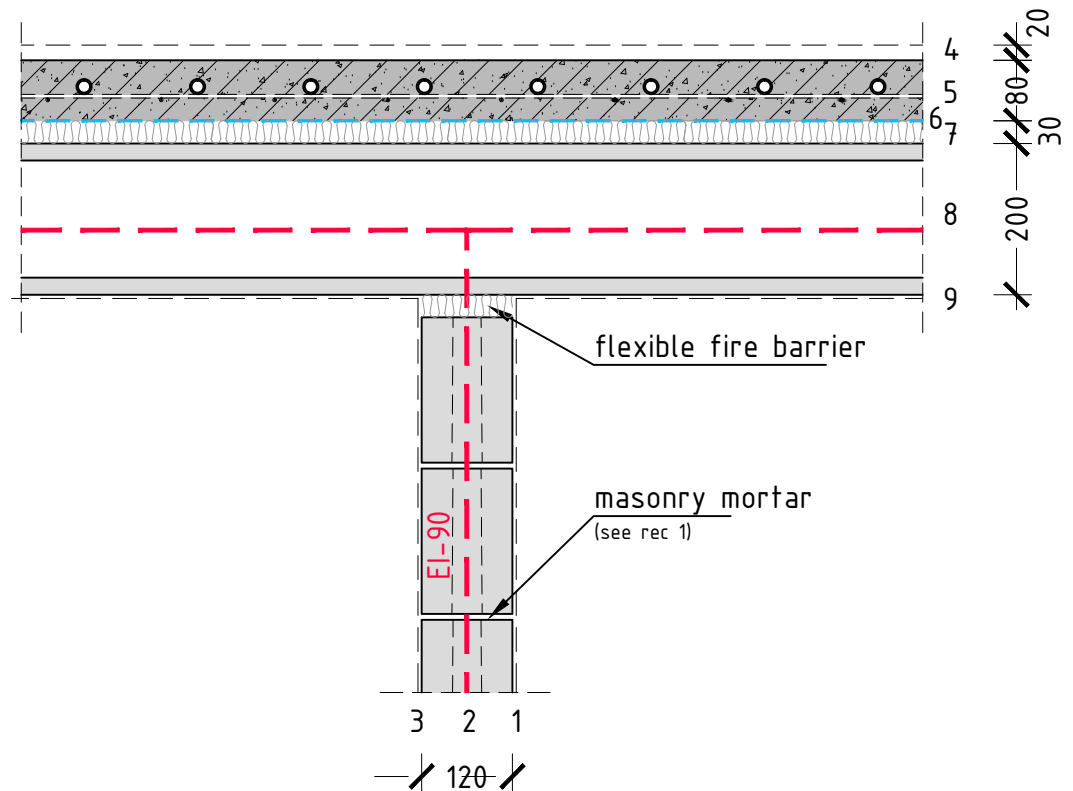


INSERTED CEILING UNIT S2.6

M1:10



CONSTRUCTION

Interior wall

1. Interior finish
2. Silicate block 300x120x192mm
3. Interior finish

Inserted ceiling

4. Floor finishing
5. Concrete slab with floor heating
6. Waterproofing
7. Step noise insulation
8. Inserted ceiling panel
9. Ceiling finishing

NOTE:

The drawing is of informative nature and not suitable for design work

STRUCTURE	NET WEIGHT [kN/m ²]	THERMAL CONDUCTIVITY [W/m ² K]	RECOMMENDATIONS
INTERIOR WALL	1,8	-	1. For more information on masonry mortar, see www.silikaat.ee/tooted/kuiivsegud/
INSERT. CEILING	5,0	-	