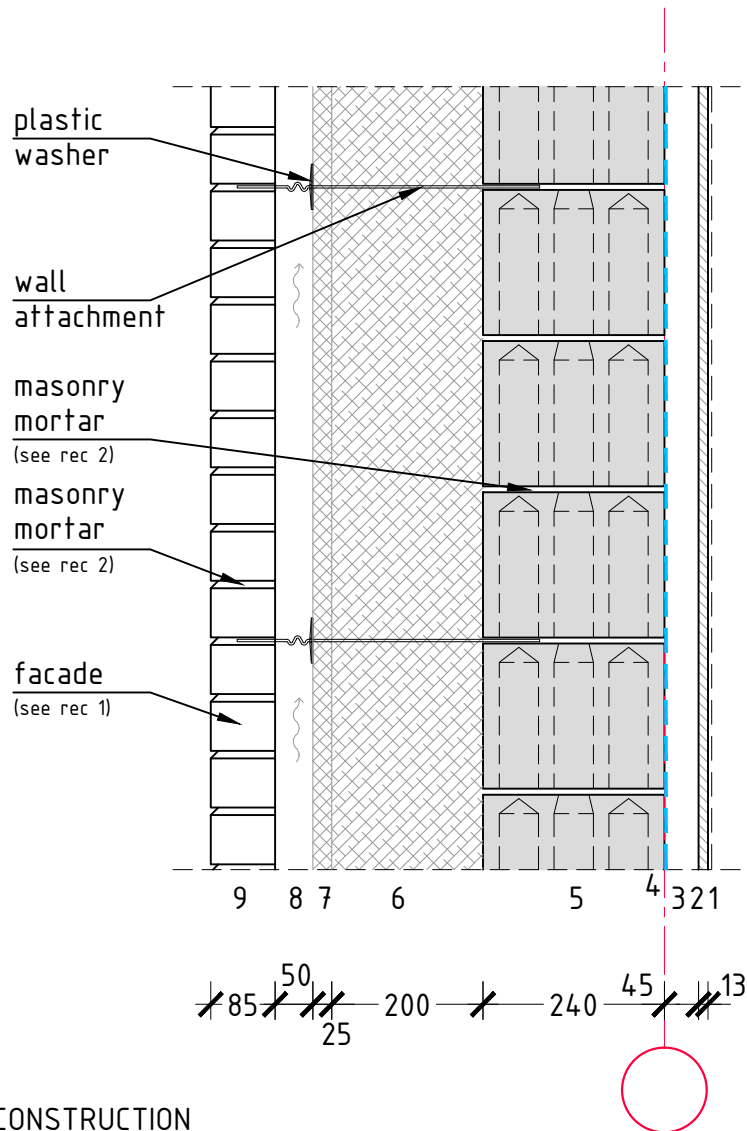


## EXTERIOR WALL S4.1

### M1:10



### CONSTRUCTION

#### Exterior wall

1. Interior finish
2. Wall plate 13mm
3. Wood frame
4. Steam barrier
5. Silicate block 250x240x192mm
6. Insulation  $\lambda=0.035\text{W/mK}$
7. Wind barrier plate  $\lambda=0.035\text{W/mK}$
8. A breathing air gap
9. Facade brick 250x85x65mm

### NOTE:

The drawing is of informative nature and not suitable for design work

STRUCTURE	NET WEIGHT [kN/m <sup>2</sup> ]	THERMAL CONDUCTIVITY [W/m <sup>2</sup> K]	RECOMMENDATIONS
EXTERIOR WALL	5,6	0,15	1. For more information on facade bricks, see <a href="http://www.silikaat.ee/tooted/silikaatto/silikaattellised/">www.silikaat.ee/tooted/silikaatto/silikaattellised/</a>
			2. For more information on masonry mortar, see <a href="http://www.silikaat.ee/tooted/kuivsegud/">www.silikaat.ee/tooted/kuivsegud/</a>