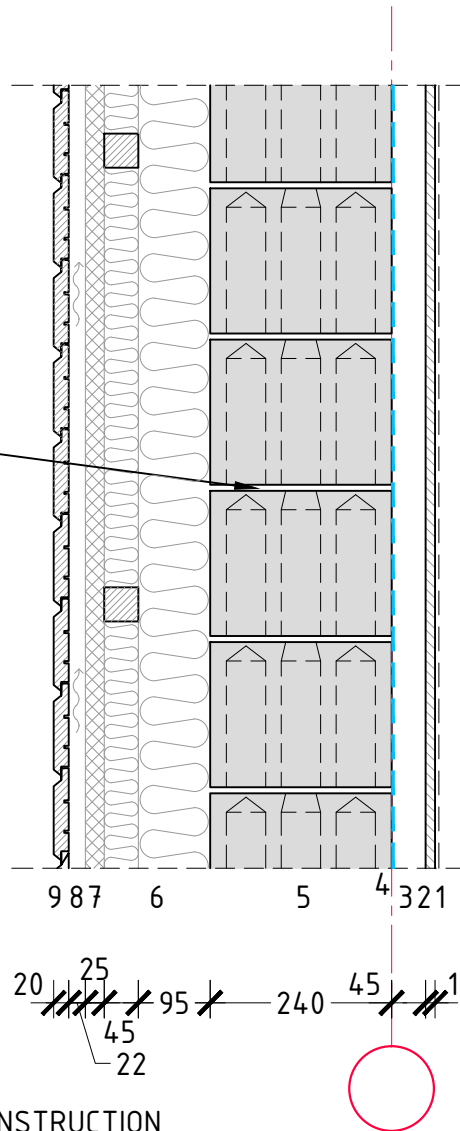


# EXTERIOR WALL S4.2

M1:10

masonry mortar  
(see rec 1)



## CONSTRUCTION

### Exterior wall

1. Interior finish
2. Wall plate 13mm
3. Wood frame
4. Steam barrier
5. Silicate block 250x240x192mm
6. Thermal insulation between a wooden cross-frame  
 $\lambda=0.035\text{W/mK}$
7. Wind barrier plate  $\lambda=0.035\text{W/mK}$
8. A breathing air gap
9. Facade board

### NOTE:

The drawing is of informative nature and not suitable for design work

| STRUCTURE     | NET WEIGHT<br>[kN/m <sup>2</sup> ] | THERMAL CONDUCTIVITY<br>[W/m <sup>2</sup> K] | RECOMMENDATIONS  |
|---------------|------------------------------------|--|--|
| EXTERIOR WALL | 3,9                                | 0,18   | 1. For more information on masonry mortar, see<br><a href="http://www.silikaat.ee/tooted/kuivsegud/">www.silikaat.ee/tooted/kuivsegud/</a> |